

District Facts

2013	District	State
# of Students	9,048	NA
% of Disadvantaged	41%	56%
% of English Learners	12%	22%
% of Students with Special Needs	11%	11%

Ethnic Composition

2013	District	State
% Asian/ Pac. Isl./ Filipino	8%	9%
% Latino	24%	53%
% African American	20%	6%
% White	35%	26%
% Two or more races	11%	2%
% Other / Not Reported	2%	4%

Graduation Rate

The four-year graduation rate represent Class of 2012 students in the cohort who graduated in four years or less with either a traditional high school diploma, an adult education high school diploma, or have passed the California High School Proficiency Exam (CHSPE).

<i>Berkeley</i>	High	District	County	State
Hispanic / Latino	86.1%	82.0%	70.2%	73.2%
African-American	81.4%	74.5%	61.9%	65.7%
Overall	86.4%	82.9%	79.4%	78.5%

Drop-out Rate

The four-year dropout rate is the rate of Class of 2012 students that left the 9-12 instructional system without a high school diploma, GED, or special education certificate of completion and do not remain enrolled after the end of the 4th year.

<i>Berkeley</i>	High	District	County	State
Hispanic / Latino	9.1%	12.8%	19%	16.2%
African-American	14.8%	21.6%	25.4%	22.2%
Overall	11.2%	14.4%	13.4%	13.2%

Progress of English Learners

(CELDT). These are measured by Annual Measureable Achievement Objectives (AMAO). AMAO1 measures the progress students have made on the CELDT. AMAO2 measures the percent of students reaching proficiency as measured by the CELDT. (2013 pending)

	District	State Target	Target Met?
AMAO 1 - Progress	65.2%	56%	Yes
AMAO 2 – Proficiency			
Newcomers (<5yrs in US)	28.7%	20.1%	Yes
Long-Term (>5yrs in US)	51.7%	45.7%	Yes

API and AYP

The Academic Performance Index (API) is the state accountability system for California. Each district is given a score from 200 to 1000 based on a formula which includes student performance on standardized tests.

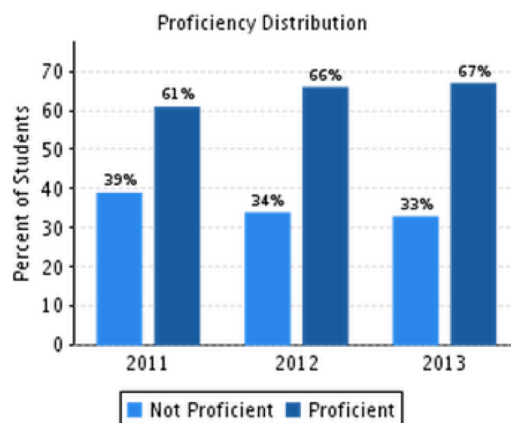
Adequate Yearly Progress (AYP) is a part of the Federal No Child Left Behind Act. It incorporates the API, student participation rates in standardized testing, graduation rates, and annual proficiency targets. The targets require a specific percentage of students to score Advanced or Proficient on state tests..

See Backside for Ethnic Breakdown over time on the AYP.

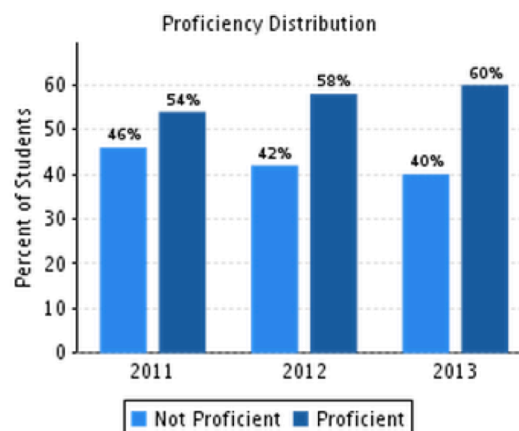
	10-11	11-12	12-13
API Score	791	811	821
Growth From Prior Year	7	20	11
Met AYP	No	No	No
Program Improvement	Yes	Yes	Yes

The California Standards Tests (CSTs) are the state-mandated tests administered to students in grades 2 to 11 in the Spring of each year. All students are tested in the areas of English Language Arts and Math (with specialized math assessment given in grades 8-11). Achievement is listed below.

English Language Arts CST – Grades 2-11

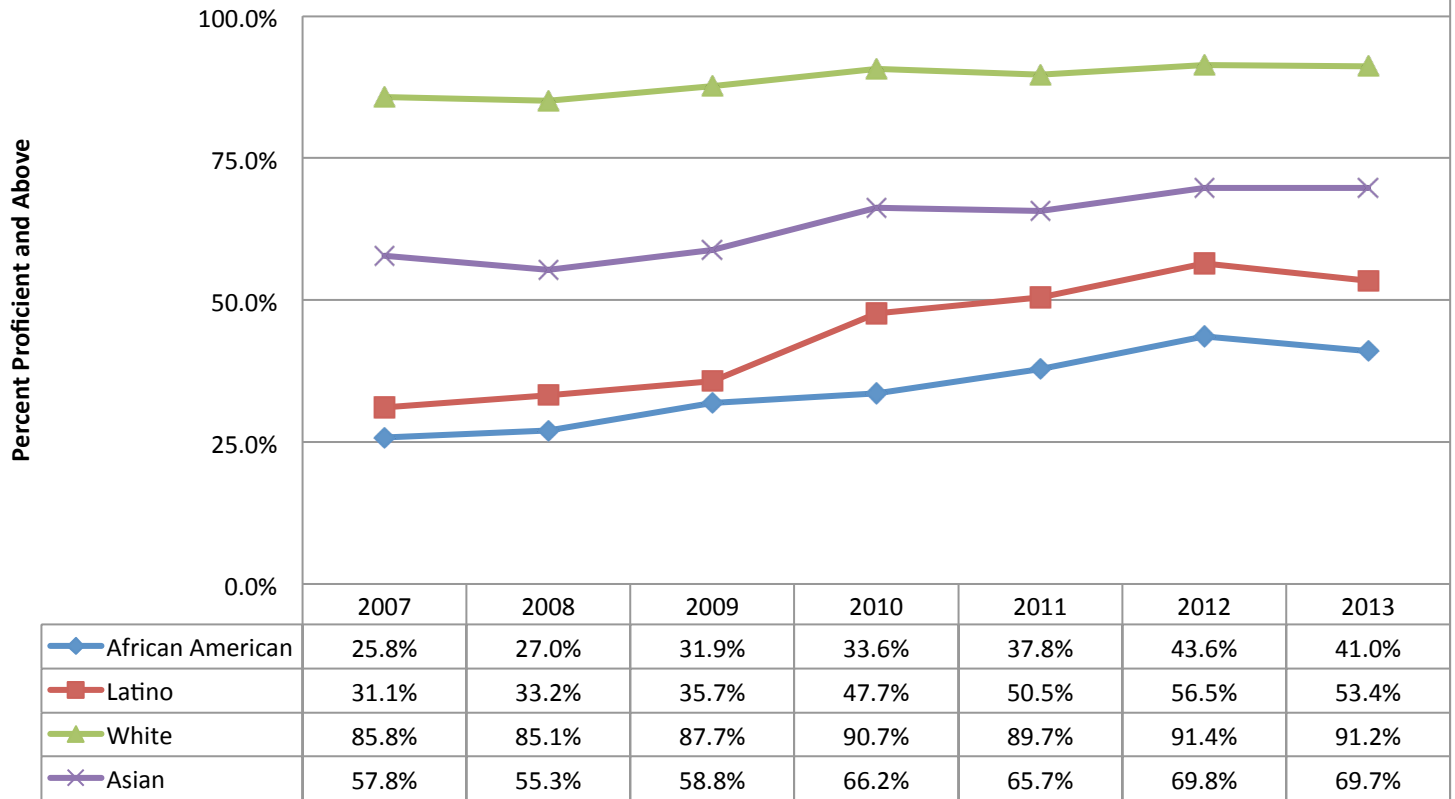


Mathematics CST (all subjects) – Grades 2-11

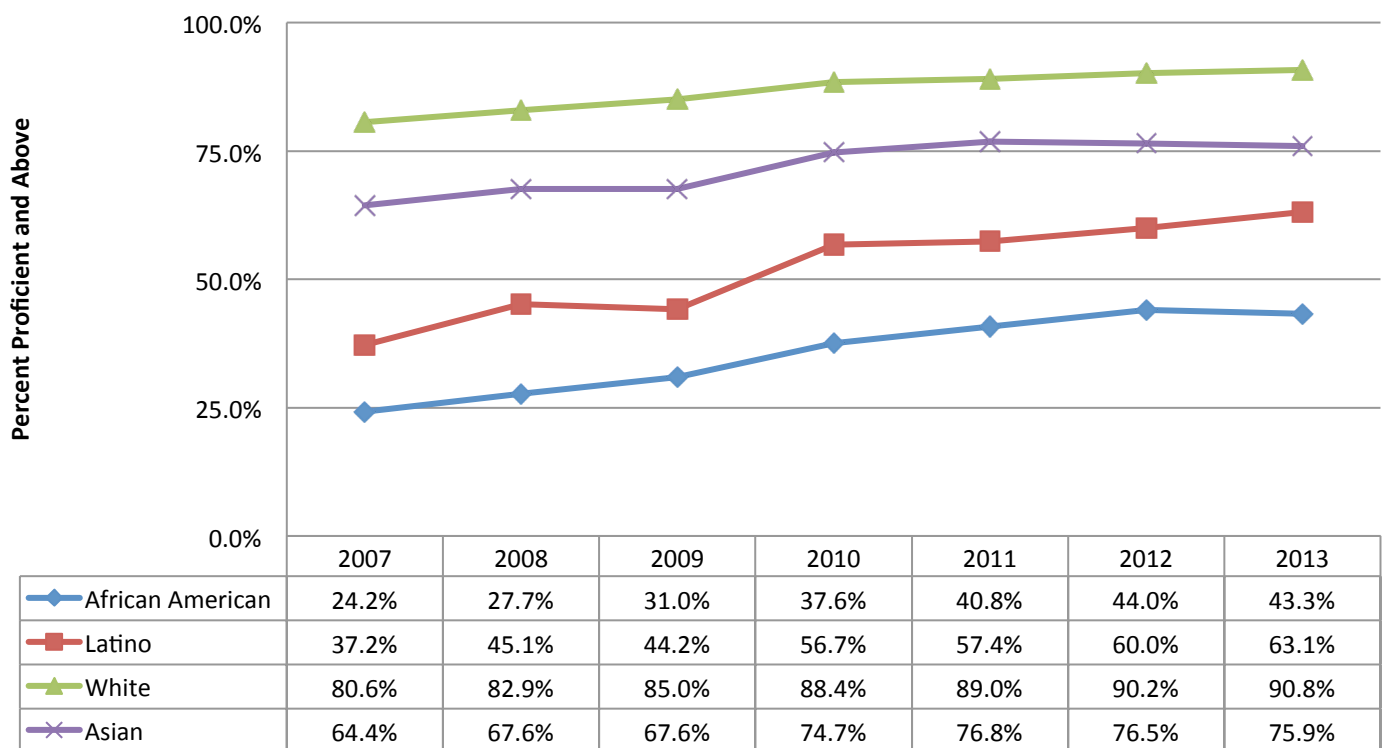


Adequate Yearly Progress Over Time by Race / Ethnicity

**Berkeley Unified School District
Percent Proficient - 2007 - 2013 English-Language Arts**

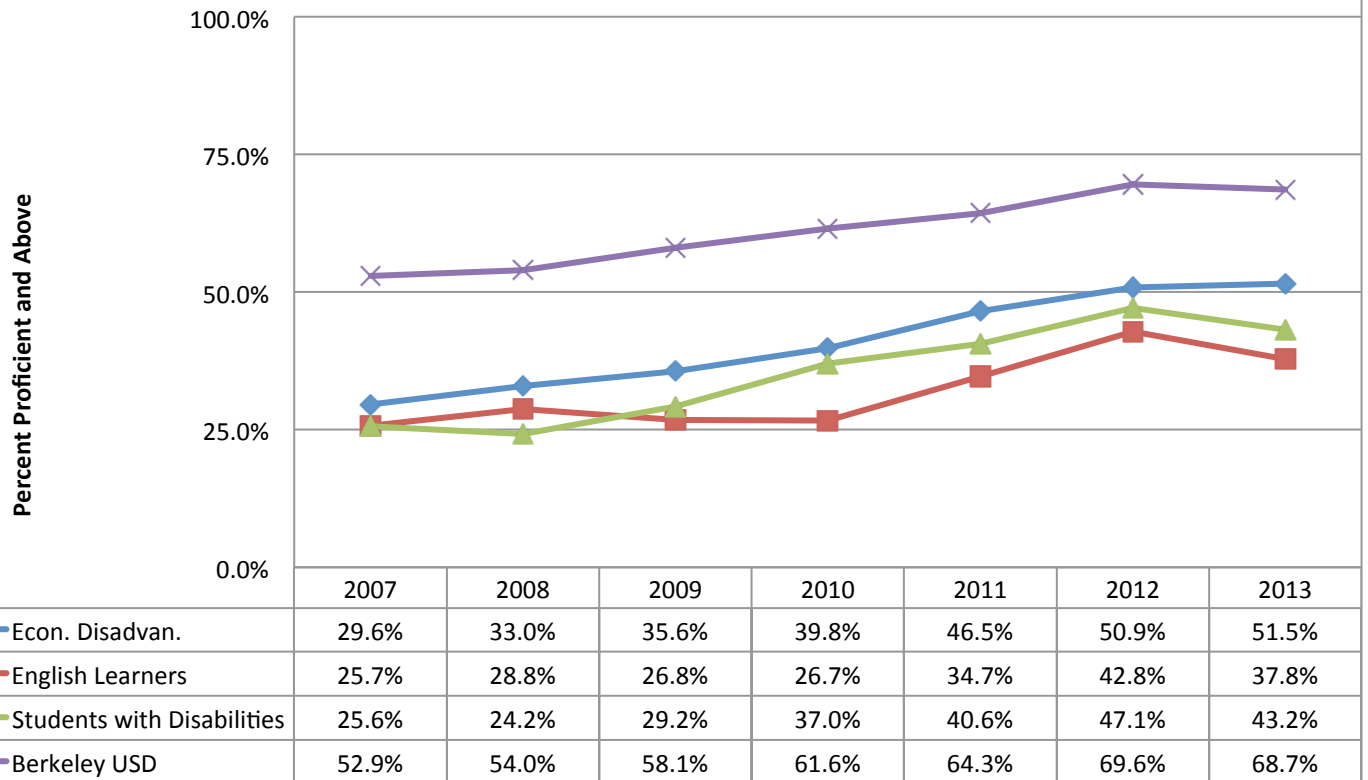


**Berkeley Unified School District
Percent Proficient - 2007 to 2013 Mathematics**



Adequate Yearly Progress Over Time by Non-Ethnic Sub-Groups

**Berkeley Unified School District
Percent Proficient - 2007 - 2013 English-Language Arts**



**Berkeley Unified School District
Percent Proficient - 2007 to 2013 Mathematics**

