

EMERSON ELEMENTARY MODERNIZATION

Concept Plan &
Programming
Staff & Community
Engagement
September 27, 2023



Modernization Scope of Work

1. **What do we have to do?**

2. What do we need to do?

3. What do we want to do?

Code required improvements

I. Accessibility Upgrades (ADA)

- Path of travel (interior and exterior)
- Campus, Building, and Classroom entrances
- Restrooms
- Handrails, drinking fountains, signage

II. Fire Life Safety

- Fire alarm replacement
- Additional fire sprinkler coverage

III. Structural Safety

- Existing conditions are reviewed and DSA determines if Structural upgrades are required

Modernization Scope of Work

1. What do we have to do?

2. What do we need to do?

3. What do we want to do?

I. Heating & Ventilation

- Replace heating system & controls
- Electrical upgrades

II. Interior finishes

- Replace flooring, wainscot, paint, ceiling tiles, refinish casework

Modernization Scope of Work

1. What do we have to do?

2. What do we need to do?

3. What do we want to do?

I. Site Improvements

- Play & Learning Area Improvements

II. Building Upgrades

- Explore the replacement of the existing windows – energy efficiency and climate control
- Paint entire school

III. Main Office Reconfiguration

- Improve site supervision

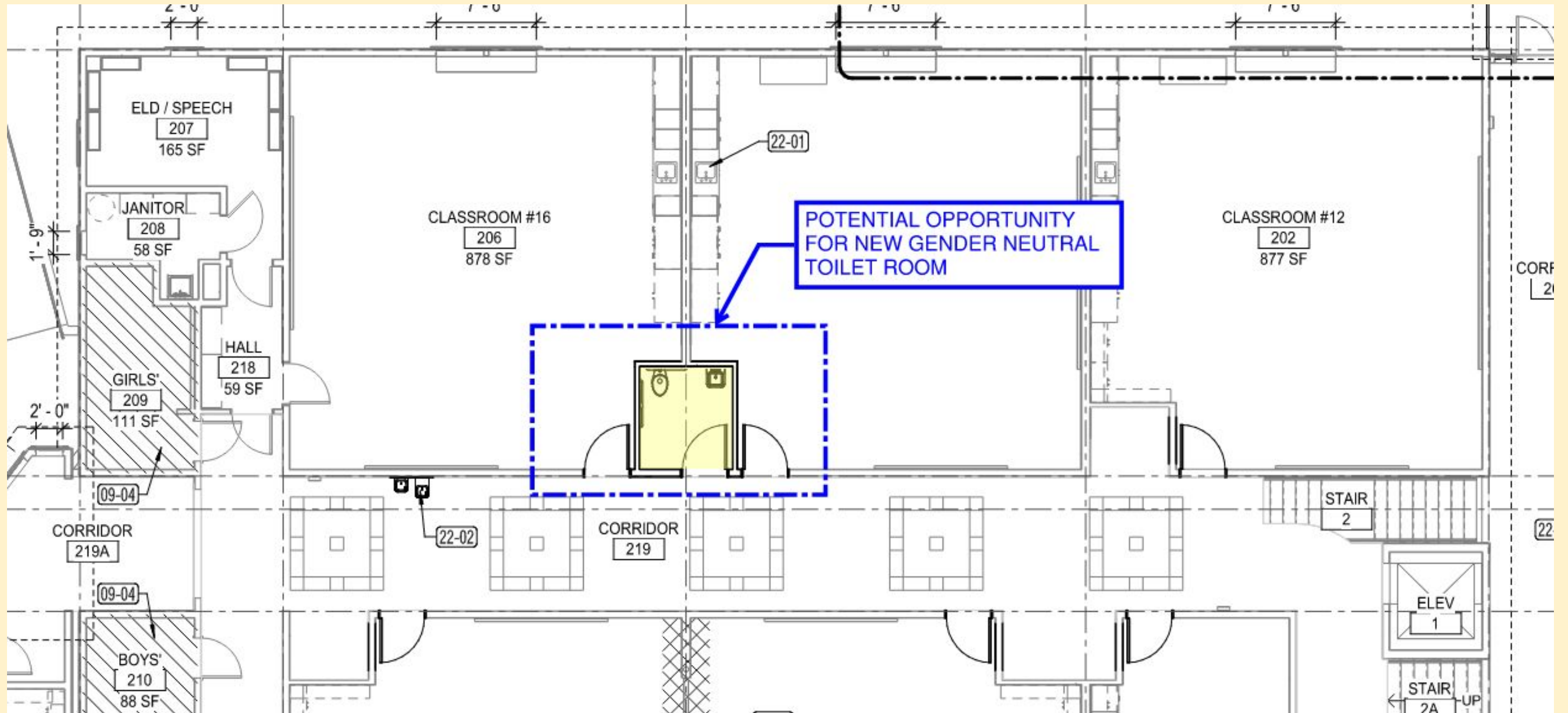
IV. Breezeway Plaza

- Provide outdoor dining and flex space

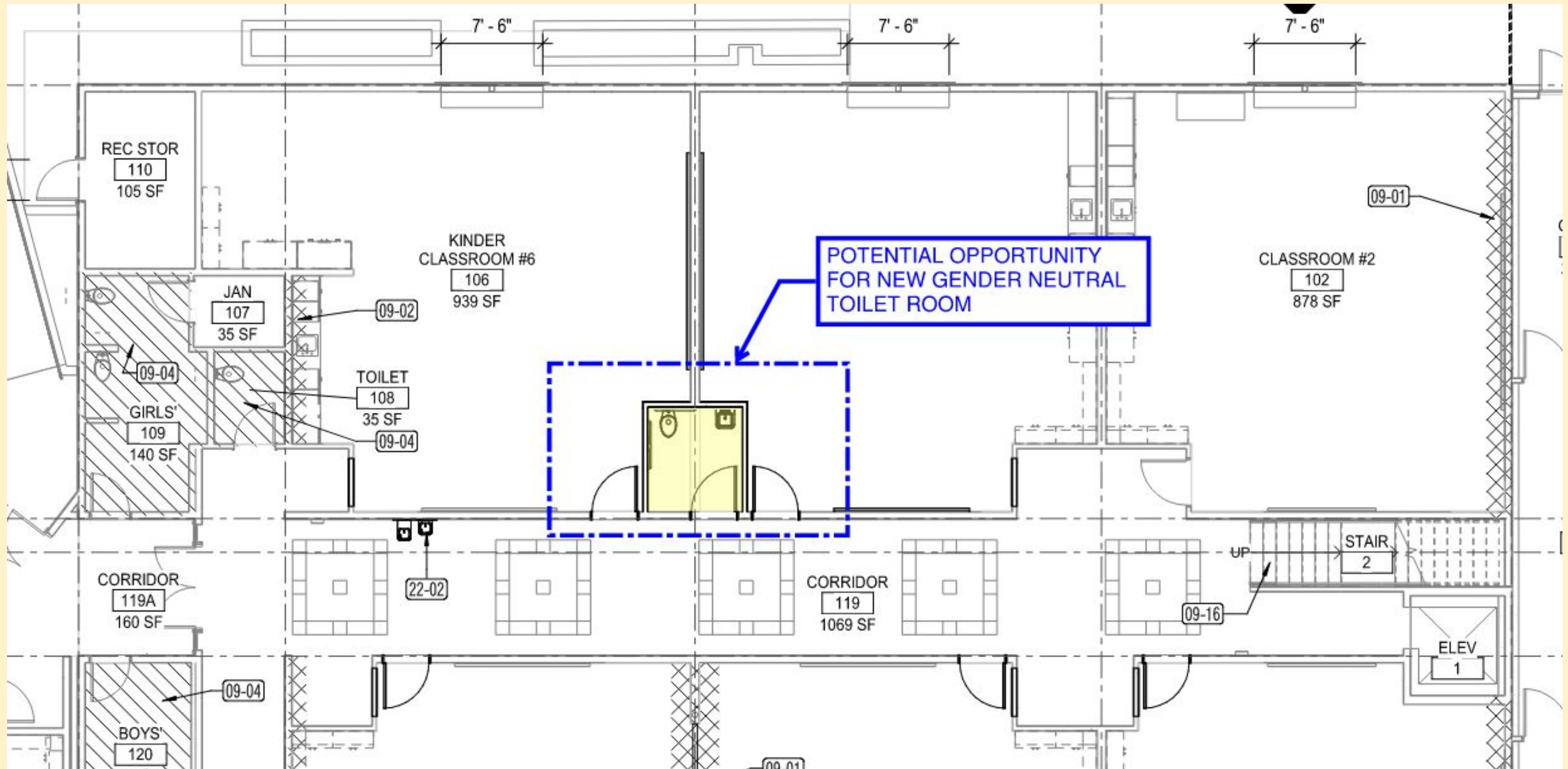
V. Kitchen Remodel

- Upgrade and modernize Nutrition Services kitchen to enhance students access and experience

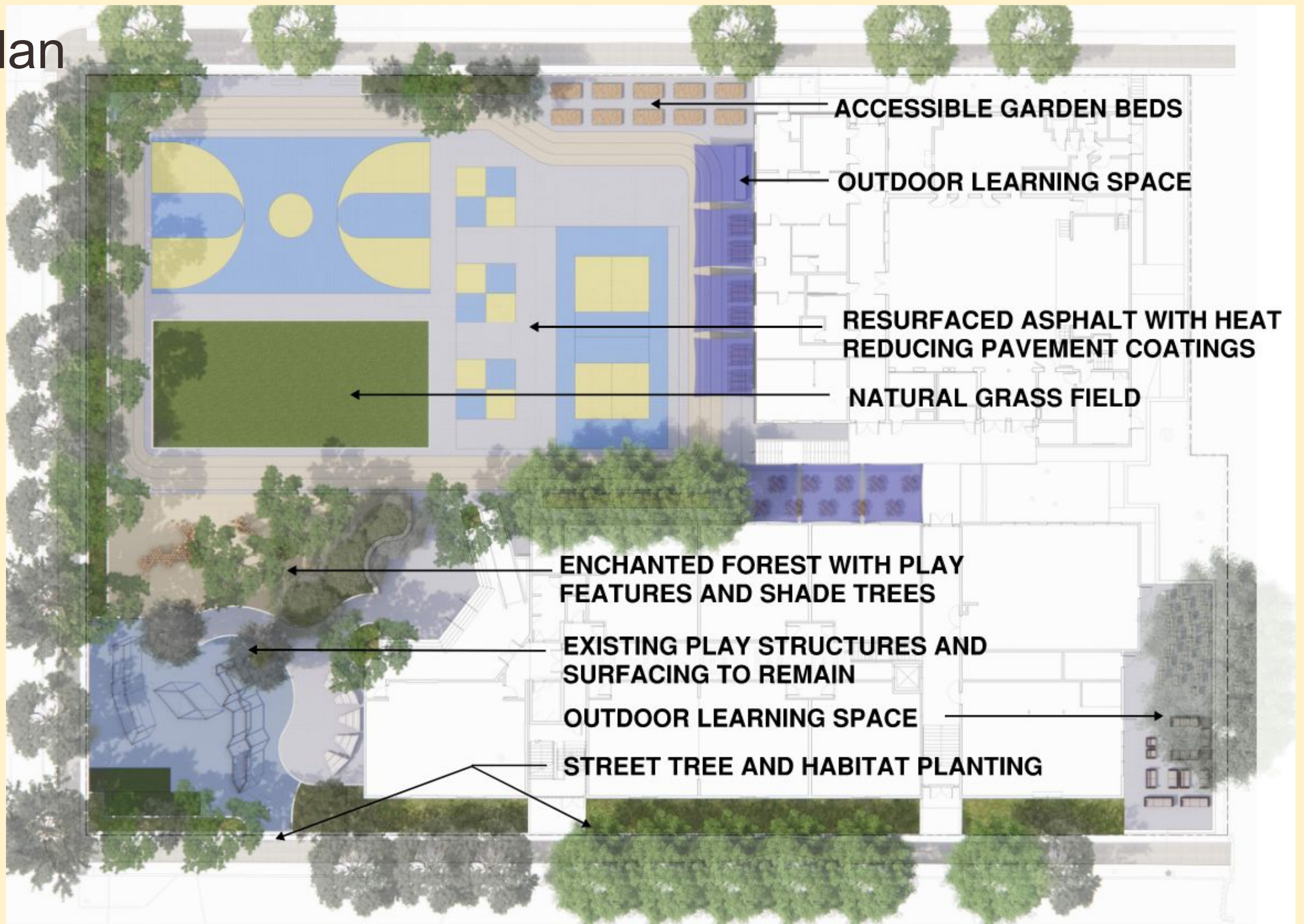
Partial Upper Floor Plan Exploring Opportunities



Partial Lower Floor Plan Exploring Opportunities



Site Plan



Possible Site Improvement - Examples



OAKLAND SCHOOLYARD PRECEDENT (CESAR CHAVEZ CAMPUS, FRUITVALE)



METAL RAISED BEDS WITH IRRIGATION SYSTEM



SIMPLE OUTDOOR KITCHEN WITH TABLE, SINK, AND OUTLETS



LARGE CANOPY SHADE TREES INTERPLANTED BETWEEN EXISTING TREES



COLUMNAR SHADE TREES NEAR STRUCTURE

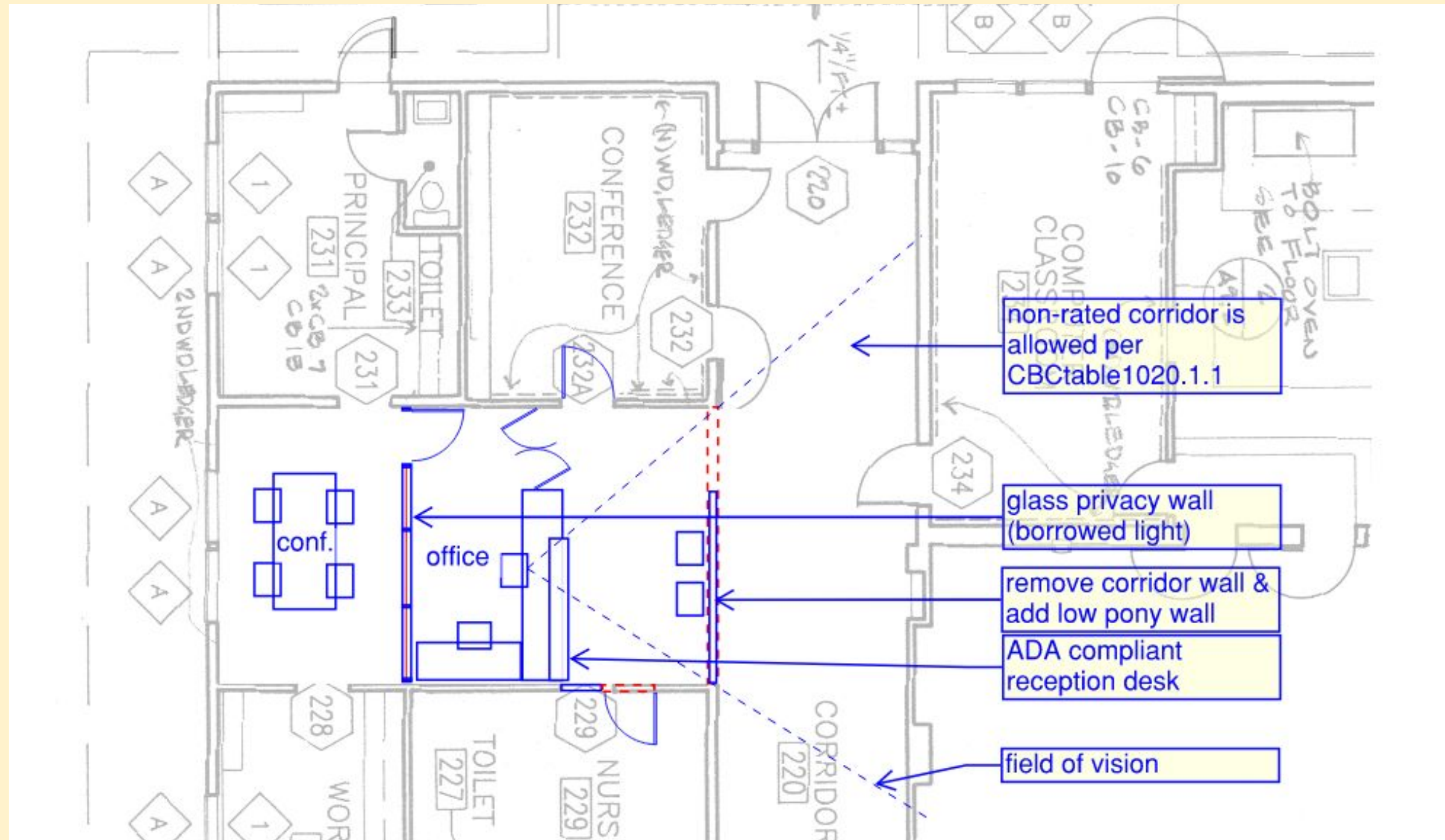


PERMANENT SHADE CANOPY



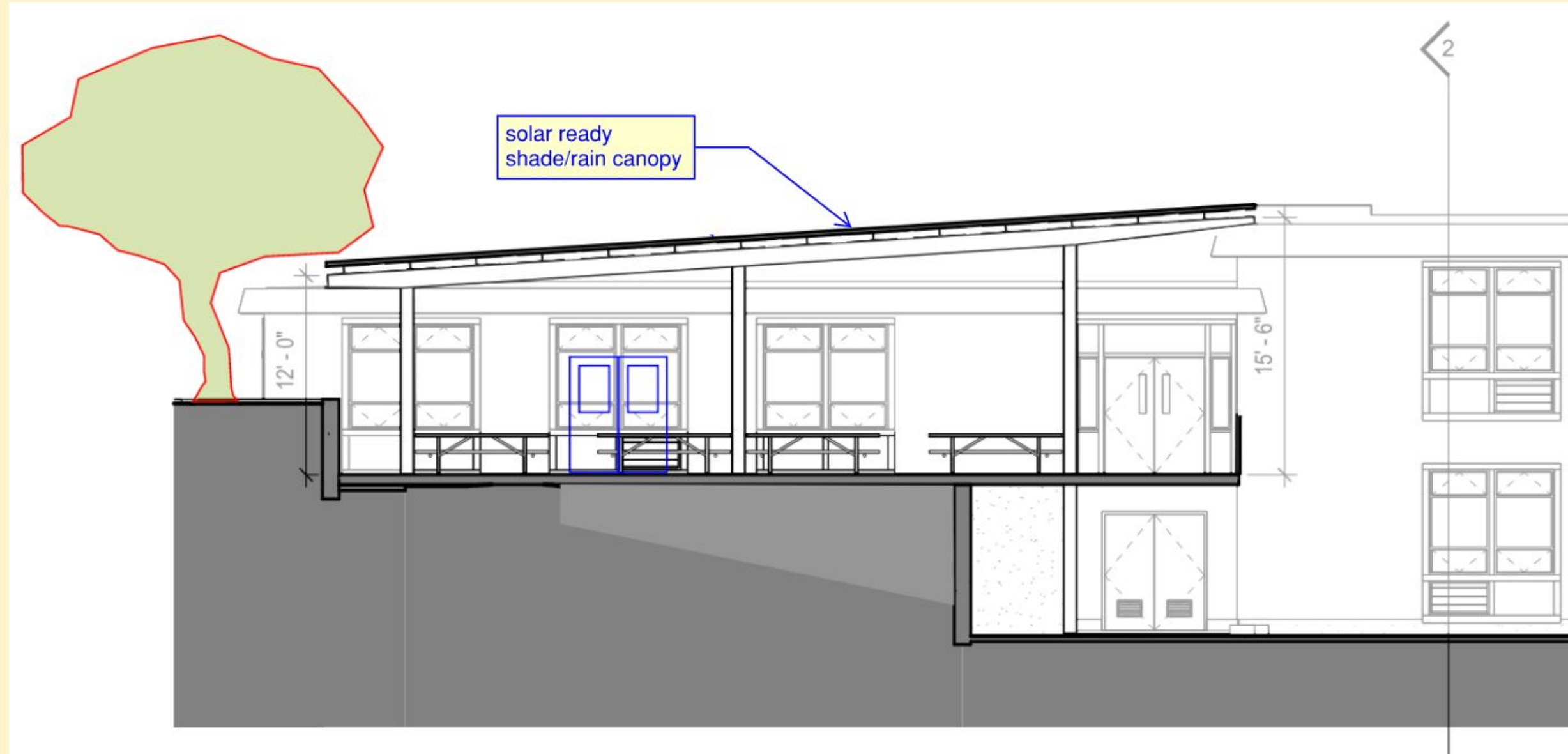
PICNIC AND DINING TABLES

Office Reconfiguration - Safety and Security (Captured Opportunity)



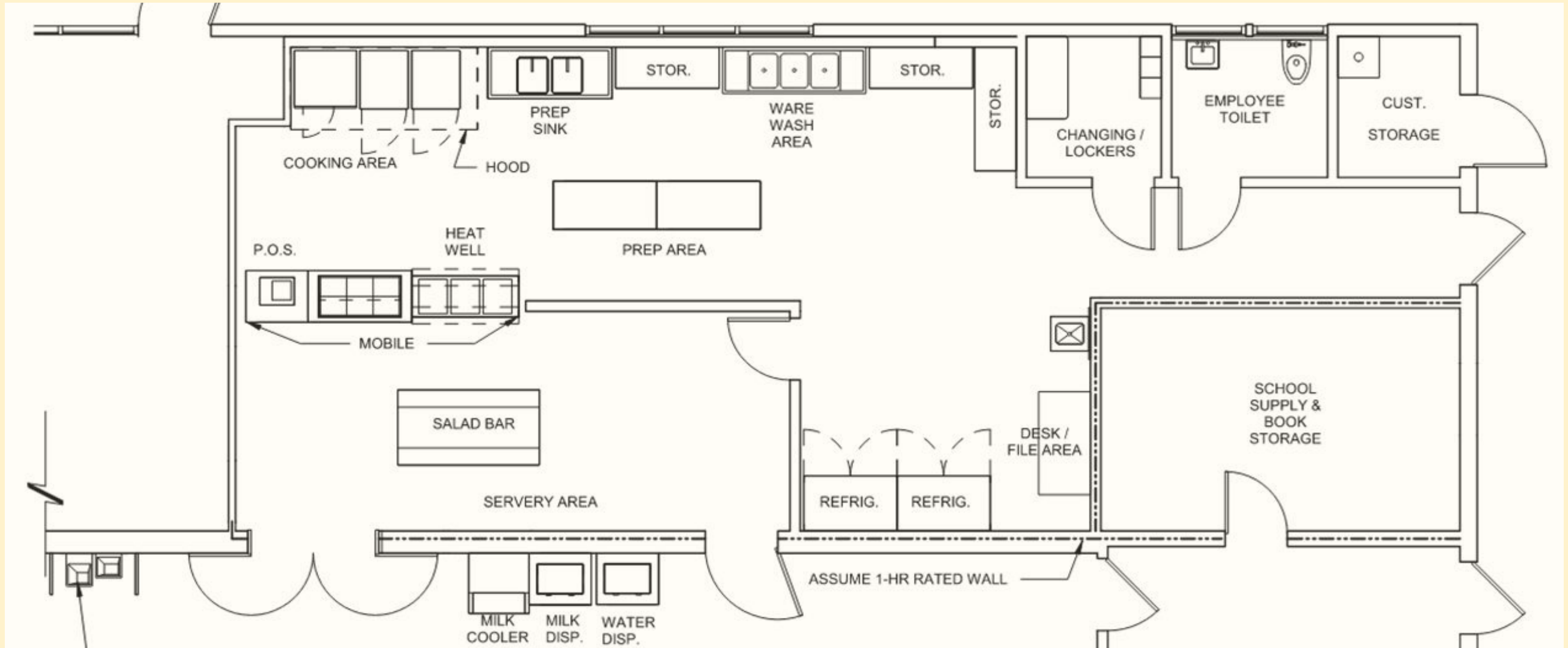
- Improve site supervision - eyes on the main school entry & improved visitor check in
- Improve efficiency and add conference room

Breezeway Plaza - Outdoor Learning Environment and Flex Space (Captured Opportunity)



- Provides additional dining seating for approximately 100 students.
- Outdoor flex space for teaching/learning
- Provides additional shaded outdoor space.

Kitchen Remodel



- Proposed kitchen design aligns with District Standards
- Supports students through improved Nutrition Services Space
- Outdoor dining on same level as kitchen, see Breezeway Plaza concept plan

Preliminary Schedule

- | | |
|-----------------------------------|-----------------------------|
| • Programming & Conceptual Design | Current |
| • Design | October 2023 – October 2024 |
| • DSA Permitting | October 2024 – March 2025 |
| • Construction | June 2025 – August 2026 |

Questions?