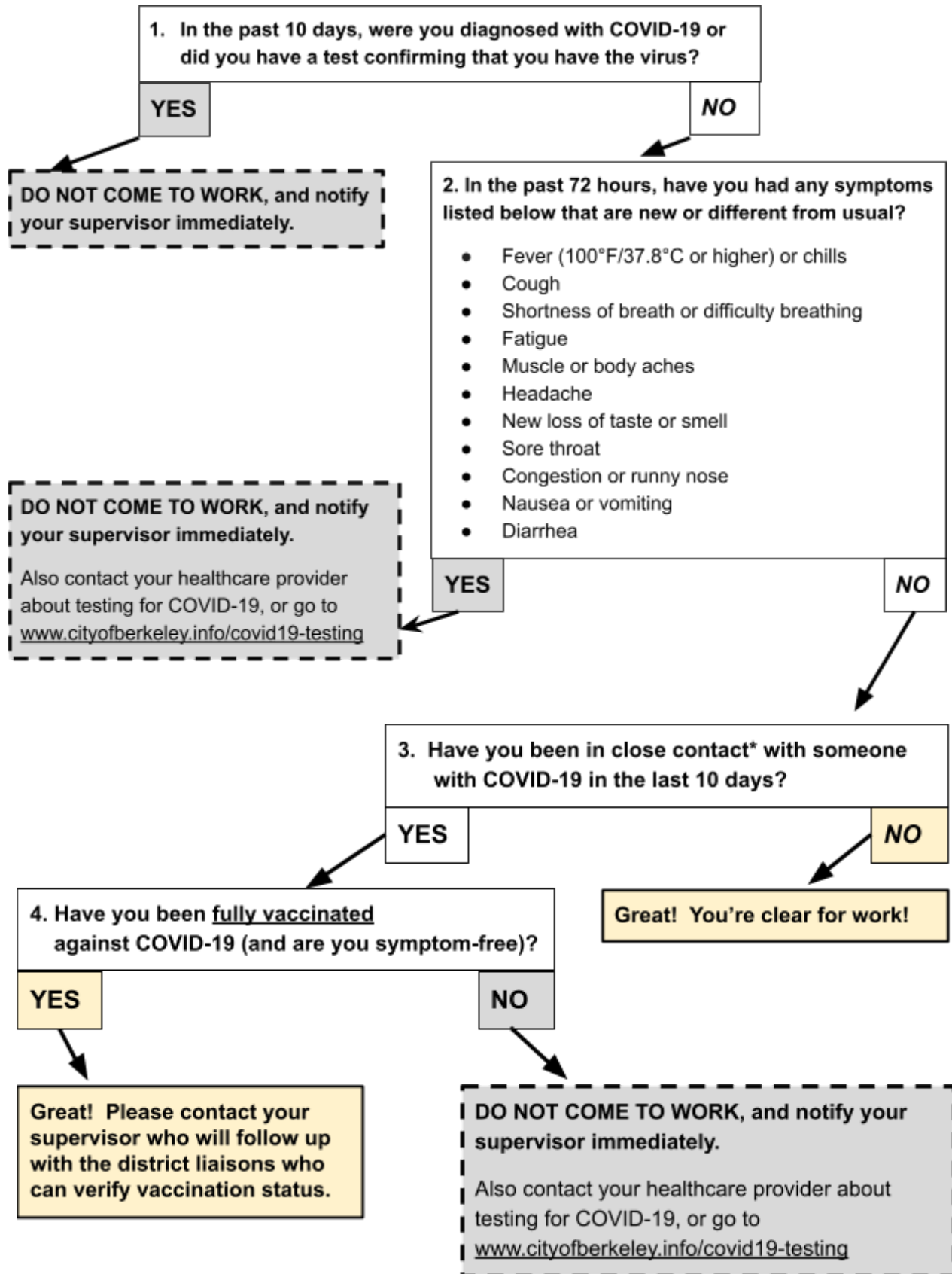


# BUSD Staff Health Self-Screening Questionnaire - June 2021



*\*Close Contact Examples:*

- In the same class or small group as someone with COVID-19
- Within 6 feet of someone with COVID-19 for a total of 15 minutes a day (even if both people were wearing masks)

Home Quarantine Instructions ([English](#) | [Spanish](#)) / Home Isolation Instructions ([English](#) | [Spanish](#))