

Berkeley Unified School District

Facilities Sub-Committee Project Updates

September 23, 2025



Our Mission

Enable and inspire our diverse student body to achieve academic excellence and make positive contributions to our world.

Excellence

Equity

Engagement

Enrichment

The Facilities Division is committed to supporting the Mission of BUSD by creating environments that promote a positive learning experience, creating safe and welcoming schools, and to afford our students, staff, and neighbors a community hub to embrace the four Es of BUSD.

Agenda

- Approval of Agenda
- Approval of Minutes of Facilities Subcommittee Meeting
 - May 16, 2024
- Public Comment
- Berkeley High School Capacity and Expansion Project Discussion
- Adjournment

Public Comment

- a. At this time, members of the public may address the Committee regarding a matter of public interest not appearing on the agenda. No action may be taken on comments of off-agenda items unless specifically authorized by law.

- b. If the speaker wishes to address the committee on an item on the agenda, time will be provided before that item. Each speaker will be allowed up to a maximum of two minutes (or less at the discretion of the Chair).

[2 Minute Timer](#)

Project History: Issues and Needs

- Facilities needs assessment and Master Plan (completed in 2019) showed the outstanding need for additional facilities to accommodate teaching and learning for Berkeley High School
- Berkeley High School Instruction was impacted from the need for Educators to regularly move their cars throughout the day due to parking restrictions.
- No tennis courts for student BHS athletes
- Moellering field lacked infrastructure (ie. changing rooms and restrooms)

Project History

- 2019 - Governing board approved parking structure with tennis courts on the roof
 - Addressed the need for parking and tennis courts
 - Did not address the need for additional campus facilities or infrastructure improvements at Moellering Fields
- 2024 - Parking permits approved by CoB, for BHS staff
 - This eliminated the need for one of the two campus issues the parking structure would solve.



BUSD developed BHS Capacity and Expansion (C&E) Project

- *Maximize efficiencies of existing BUSD Properties (Berkeley High School and Moellering Field)*
 - Taking softball field from BHS (building out Moellering), adding tennis courts, adding new building to the BHS campus
- *This project and all of the improvements are dependent on changes to Moellering fields*

C&E Project Goals

BHS Capacity and Expansion (C&E) Project attempts to resolve all of these issues leveraging existing BUSD Properties (Berkeley High School and Moellering Field)

- Resolve major campus challenges by adding additional restrooms, offices and conference areas
- Improve site capacity for teaching and learning, while creating efficiency on campus to continue to support student success
- Expand the Career Technical Education Opportunities with dedicated and appropriate lab space
- Enhance athletic facilities at both Moellering Field and the main campus, including the long-anticipated addition of tennis courts to meet student and program needs.

Why capacity expansion?

- Adds essential classroom and instructional space to alleviate overcrowding at Berkeley High School
- Creates modern, flexible learning environments to support student success
- Includes dedicated Career Technical Education (CTE) labs to meet program needs
- Expands gender-neutral restrooms to address long-standing facility gaps
- Provides additional office space to improve staff support and campus safety
- Maximize efficiency of District Property

Why Moellering Field Improvements?

- Expands equitable access to high-quality athletic facilities for all student-athletes
- Relocating the softball field to Tim Moellering Field creates space for new tennis courts on the Berkeley High School campus
- Enable District to add necessary infrastructure to support student athletes
- Enables more efficient use of district land
- Revitalizes Moellering Field as a valuable asset for both school programs

Softball Field Relocation



Initial Proposal

Moellering Field Concept #1

Primary Athletic Challenges:

- Short RF Line
- Non-conventional warning track



May 2025 Proposal

Moellering Field Concept #2

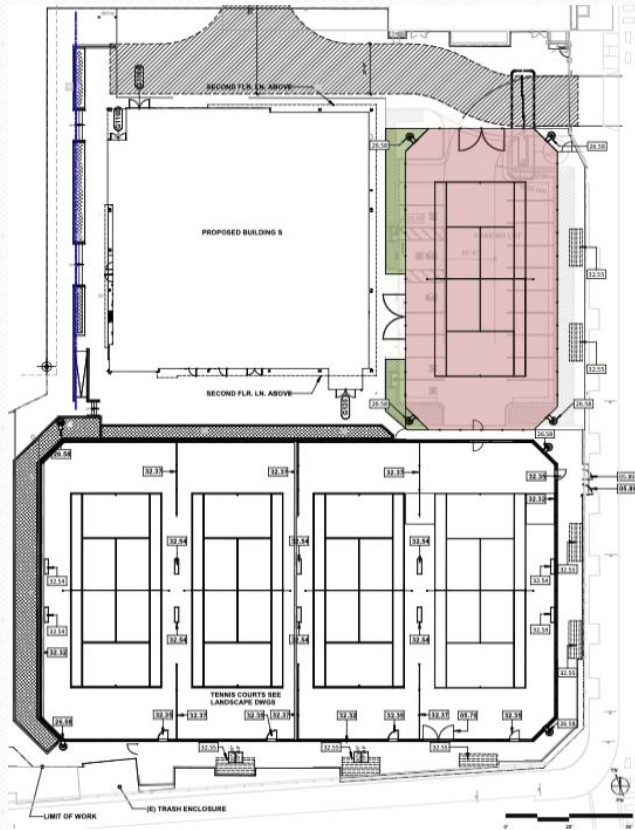
Primary Athletic Challenges:

- Prevailing Winds



May 2025 Proposal

Berkeley High School New “S” Building and Tennis Courts



Existing BHS C&E Proposal

- 9 Additional Gen-Ed classrooms
- Additional Office and Conference Space
- Cross-Campus Supervision and Administrative Support
- Dedicated CTE Advanced Machining and Robotics Lab
- Parity between Baseball and Softball
- (5) Tennis Courts
- Restrooms

New BHS C&E Proposal

- **28** Additional Gen-Ed classrooms + 4 in G Bldg.
- Additional Office and Conference Space
- Dedicated CTE Advanced Machining (Applied Manufacturing) and Robotics and robotics design and engineering Lab
- (4-5) Tennis Courts at Moellering Field
- Parking (potentially)

Newest C&E Proposals

Option #1

OPTION 01

Two story parking + Robotics/ CTE at ground level, near Durant Ave.

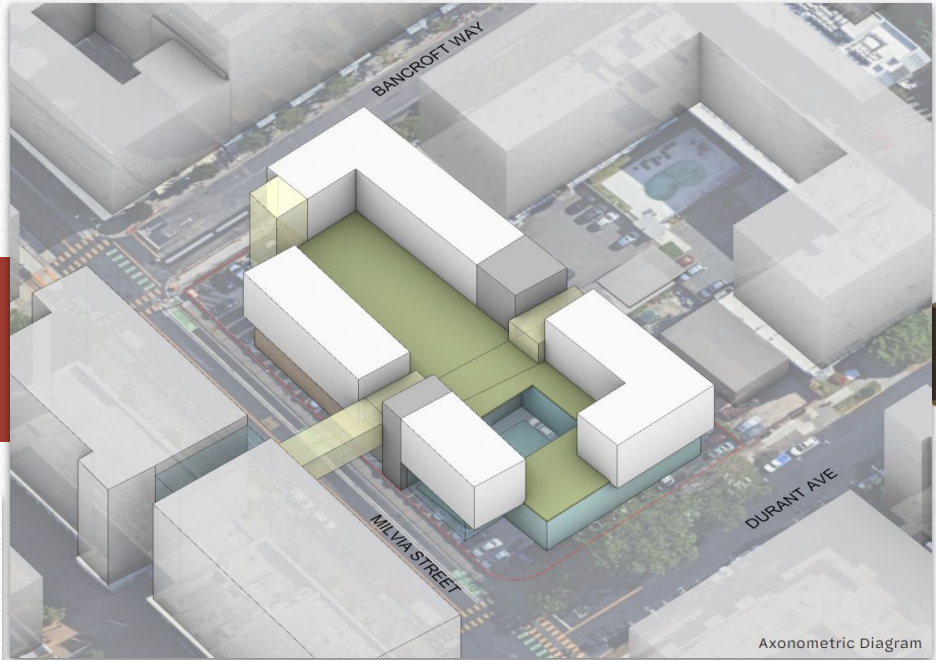
Parking area : 28,350 sf total

Parking count : **94** spaces, @ 300sf/ space

Classroom count : **28** classrooms @ 960 sf ea.

LEGEND:

robotics program parking classroom circulation support open space



Axonometric Diagram

Newest C&E Proposals

Option #2

OPTION 02

Split Two story parking + CTE/ special program as its own mass

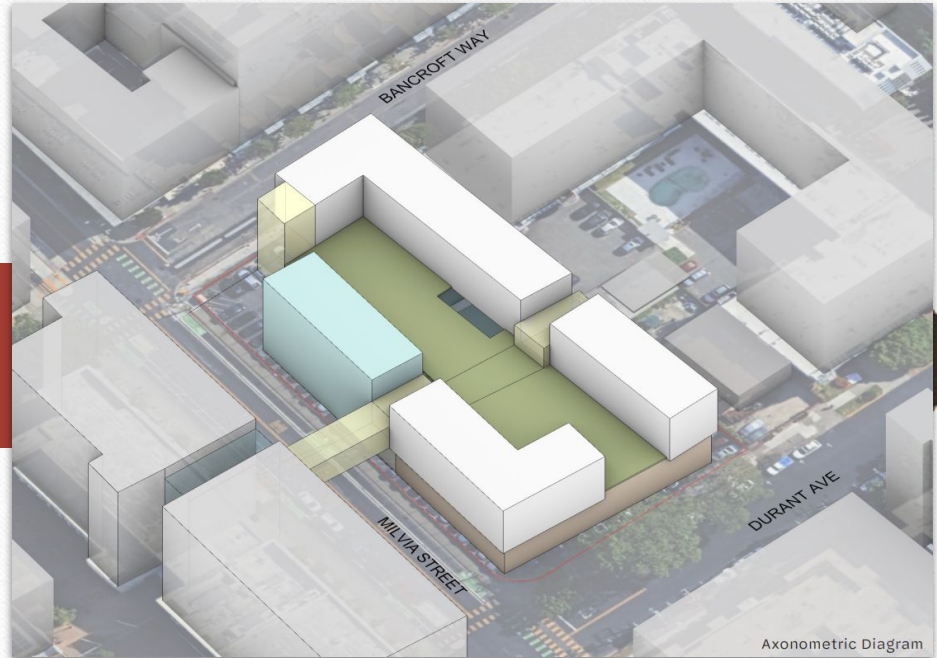
Parking area : 28,350 sf total

Parking count : 94 spaces, @ 300sf/ space

Classroom count : 28 classrooms @ 960 sf ea.

LEGEND:

CTE or special program parking classroom circulation support open space



Newest C&E Proposals

Option #3

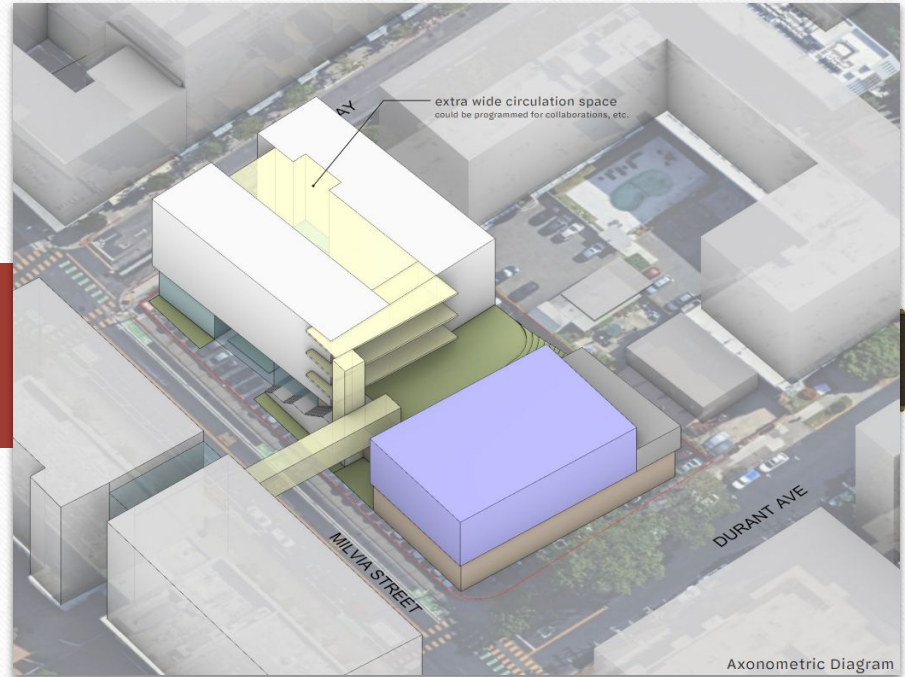
OPTION 03

Two story parking + Robotics at ground level + Gym building

Parking area : 33,250 sf total
Parking count : **110** spaces, @ 300sf/ space
Classroom count : **28** classrooms @ 960 sf ea.

LEGEND:

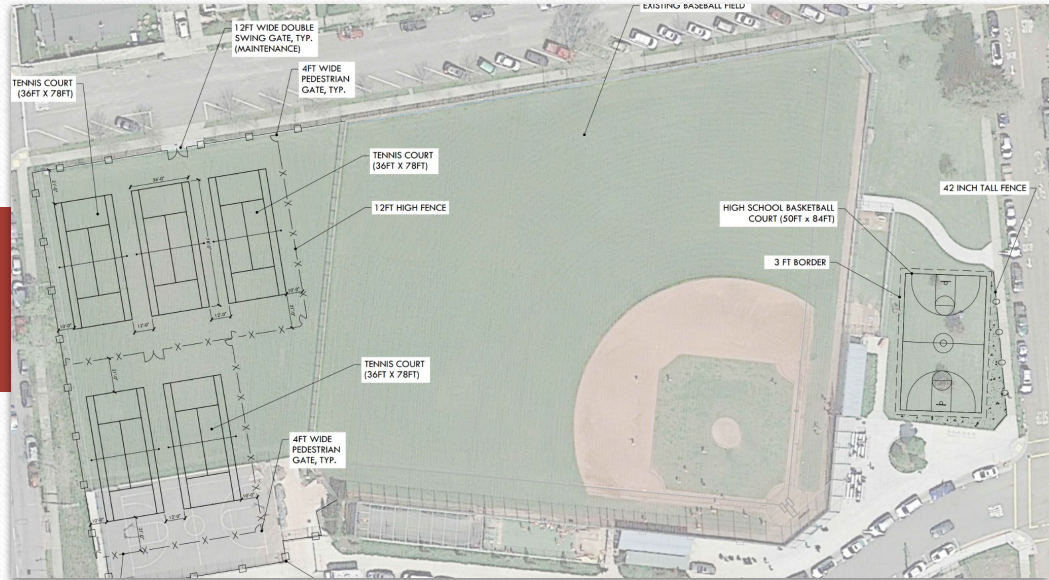
robotics program parking classroom circulation support open space gym



Moellering Field Newest Proposal

Option #1

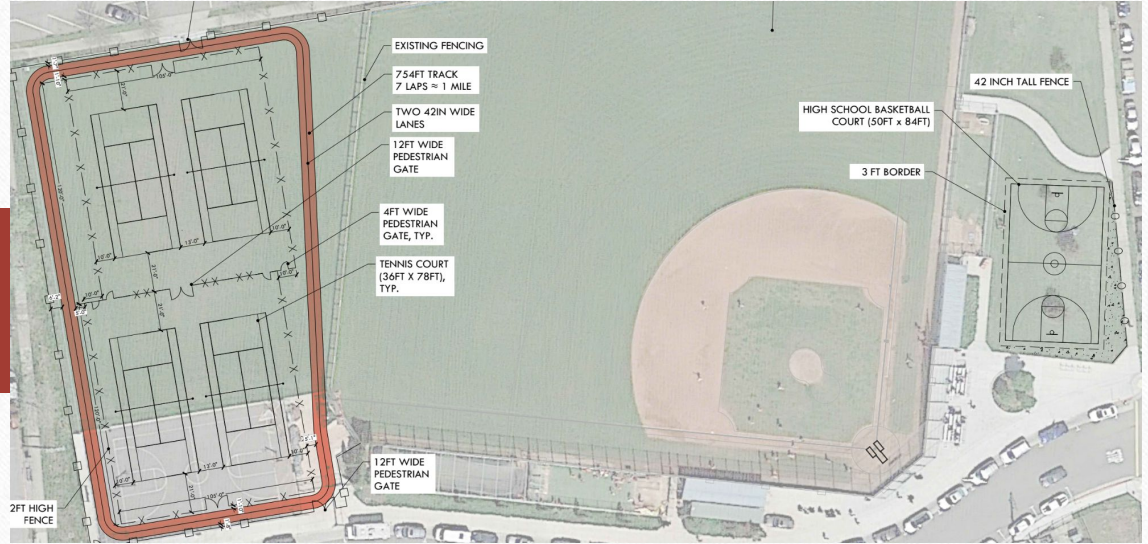
- 5 Tennis Courts
- Reduction of Green Space
- Relocation of Basketball Court



Moellering Field Newest Proposal

Option #2

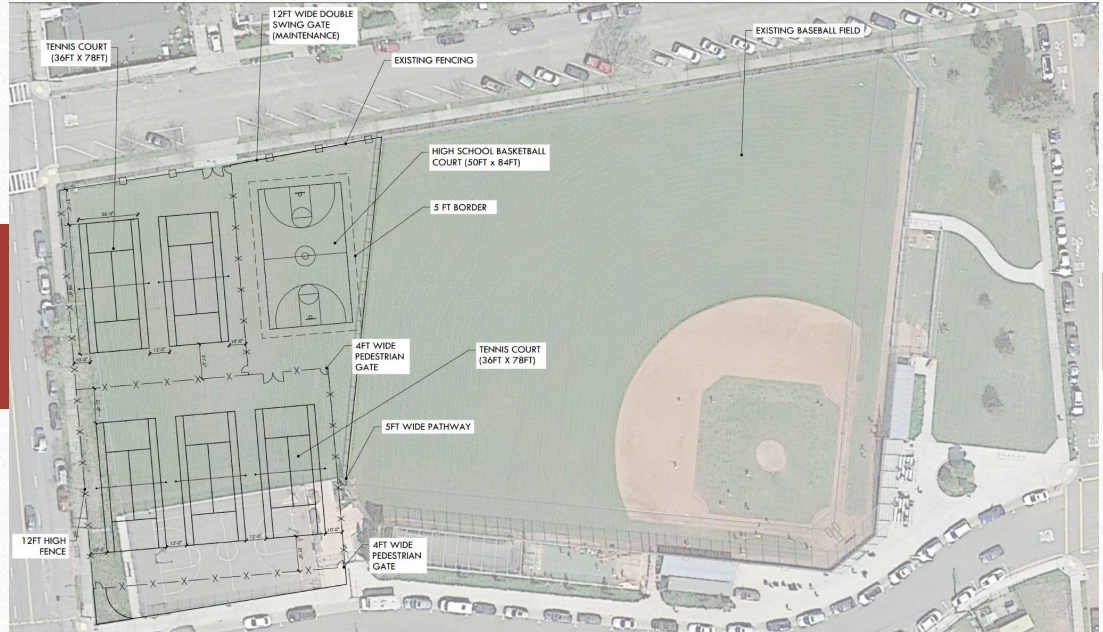
- 4 Tennis Courts
- Walking Track
- Reduction of Green Space
- Relocation of Basketball Court



Moellering Field Newest Proposal

Option #3

- 5 Tennis Courts
- Relocation of Basketball Court
- Smallest Reduction of green space



*BUSD Additional Land
Options*

*Potential Community
Space*



Community Dog Park

ESTIMATED COSTS

Current Proposed Project

\$49.7 MM

New Proposed Project

With added parking = 90,000 sf

\$130-\$180 MM

Without parking = 61,000 sf

\$110-\$160 MM (reduce \$20M)

Staying Informed and Engaged

Berkeley High School Capacity & Expansion (C&E) Project

BUSD Facilities Website

Facilities

2515 Ninth Street, Berkeley, CA 94710
Tel: 510.644.6066 | Fax: 510.644.8983
Hours: Monday – Friday, 8:30 AM – 4:00 PM

John Calise, Assistant Superintendent
Carol Pacheco, Executive Assistant I
Chanita Stevenson, Facilities Planning Analyst

For facility rentals, please see the [School Facilities Use Application](#) or contact Loren Nakamura at 510.644.8603 for more information.

[School district field conditions](#)

Department Overview

The school buildings in Berkeley (historic and recent) are considered architectural showpieces. Several have won architectural design awards over the years. Most importantly, these school buildings have served generations of Berkeley children and provided a gathering place for many community members.

Thanks to the local community for their support of four general obligation bonds – Measure A (1992), Measure AA (2000), Measure I (2010), and Measure G (2020) – have provided the Berkeley Unified School District with a unique opportunity to carefully review its facilities needs and plan for the future. Staff presented to the Board fourteen separate comprehensive plans over the years that defined the major elements of the district's massive construction efforts.

The Facilities Department oversees the facilities construction bond and all capital improvement projects of district schools, buildings, and property. Providing oversight of bond expenditures is the [Construction Bond Oversight Committee](#). The Committee members are appointed by the Board of Education.



BUSD Facilities SubCommittee

Facilities Subcommittee of the Board of Education

The purpose of the Facilities Subcommittee is to serve as a forum for discussion and recommendations to the Board regarding facilities planning and future construction projects, with a particular focus on how they can best serve the District's educational mission. It is intended to expedite the review and approvals for the District's facilities needs. Unlike the Construction Bond Oversight Committee, which reviews past funding for construction bond projects, the Board's Facilities Subcommittee looks forward, focusing on potential future allocations of construction bond revenues.

The Subcommittee consists of two Board members and was established by the Board on Sept. 13, 2017. It held its first meeting on Nov. 29, 2017.

Facilities Subcommittee Meeting Information

Facilities Subcommittee meetings take place at 2515 Ninth Street at 5:00 pm.

Upcoming Meetings:

- Thursday, March 27, 2025

Meeting Materials from 2022-23 to Present

Special Meetings are marked with an asterisk (*).

Meeting Date	Agenda	Packet	Minutes & Recordings
March 27, 2025*	Agenda	Packet	
December 15, 2024	Agenda	Packet	
November 14, 2024	Agenda	Packet	Approved Minutes
May 16, 2024	Agenda	Packet	Approved Minutes
March 7, 2023	Agenda	Packet	Approved Minutes
November 3, 2022	Agenda	Packet	Recording
September 22, 2022	Agenda	Packet	Recording Approved Minutes
August 2, 2022	Agenda	Packet	Recording Approved Minutes

Meeting Documents from Previous Years

- 2021-2022

Community Engagement Opportunities

Berkeley High School Capacity & Expansion (C&E) Project

Past

- December 2024 - BUSD Board Meeting
- January 2024 - BHS Program Capacity and Expansion Opportunities Community Meeting
- February 2024 - BUSD Board Meeting
- February 2024 - Moellering Field Zoom Meeting
- June 2024 - Moellering Field Community Meeting Webinar
- May 2025 - Berkeley High School Capacity & Expansion Community Meeting

Upcoming (2025)

Questions

facilities@berkeley.net

