

**UPDATE**  
**2026-27 Annual Plan Information and HQI Update**

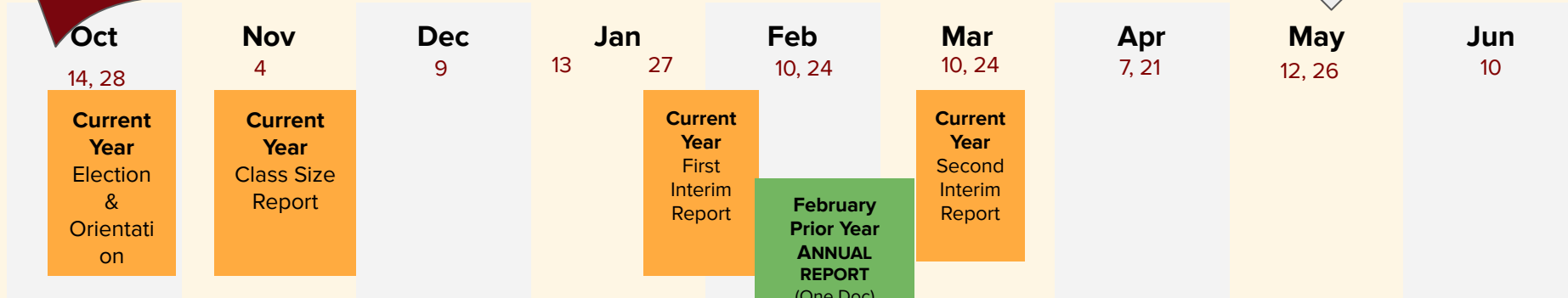
**Planning and Oversight Committee Meeting**  
5-26-26

**BSEP & BERRA  
Timeline**

Prior Year

Current Year

Next Year



**Prior year** Annual Report Info (included in Program Overview) : Revenue & Expenses, Program Activities, Most Recent Data

**Current year PROGRAM OVERVIEWS**  
Snapshot of **Current Year** Activities and Update

**Next Year's REVENUE PROJECTIONS**  
January

- Based on Bay Area CPI
- Allocations by Resource
- Allocations to Sites

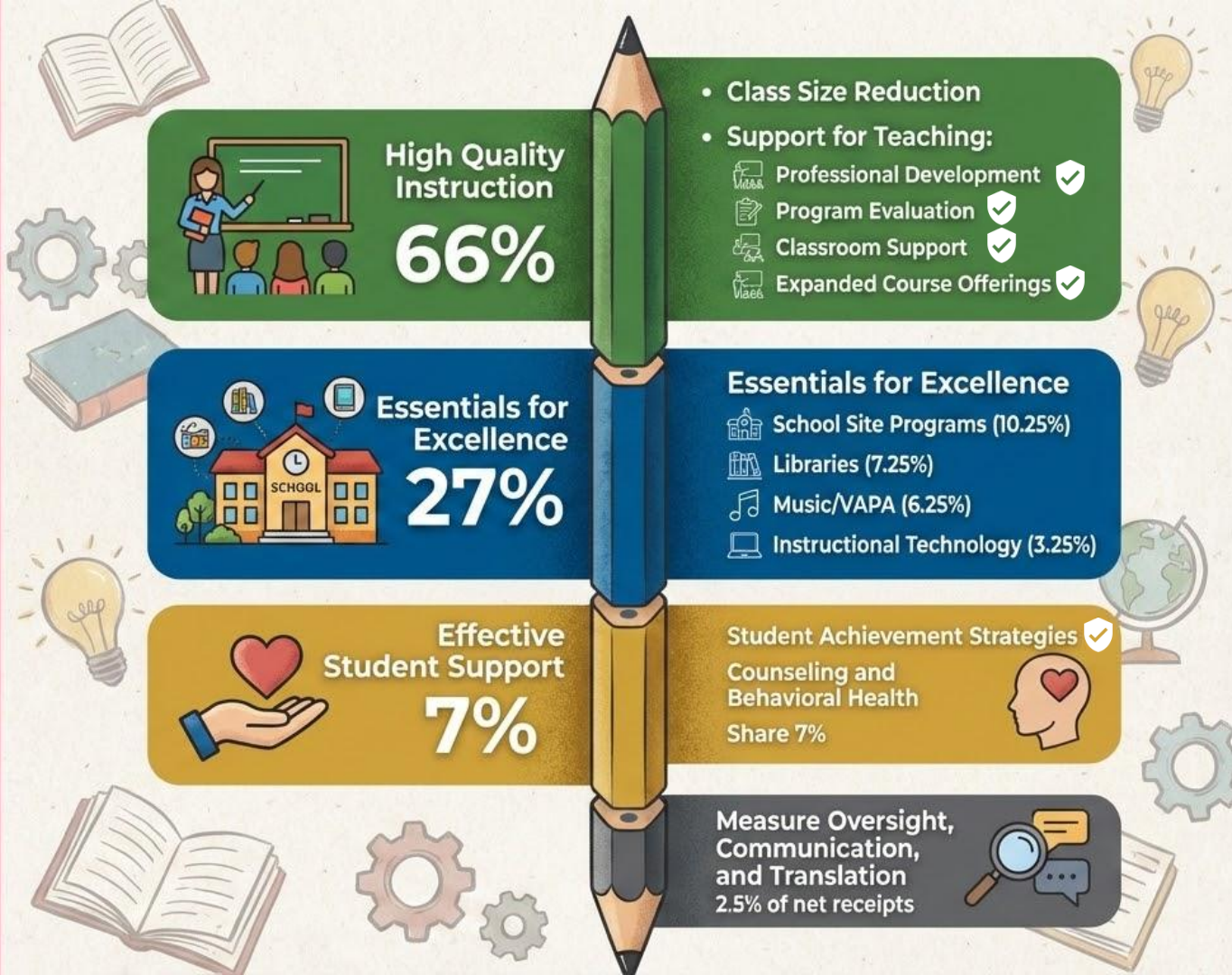
**Next Year's ANNUAL PLANS**

- Feb - May: P&O Two Readings (Activities, Budget and Data)
- May Recommend to Board for Approval (P&O Statement to the Board)
- June 3 10 Board Approval ← **update**

# Measure H of 2024 Framework

## BSEP Resources

5/26/26 Programs for Action ✓



**2026-27 BSEP and BERRA Plans**  
**Timeline as of 5-12-26 (subject to change)**



<b>2/24/26</b>	<b>3/10/26</b>	<b>3/24/26</b>	<b>4/7/26</b>	<b>4/21/26</b>	<b>5/12/26</b>	<b>5/26/26</b>	<b>June 10</b>
<b>Discussion</b>	<b>Discussion</b>	<b>Discussion</b>	<b>Discussion</b>	<b>Discussion</b>	<b>Action</b>	<b>Action</b>	<b>Action</b>
<i>HQI: Class Size Reduction (BSEP Teacher Template)</i>	<i>Program Evaluation</i>	<i>Music/Visual and Performing Arts (VAPA)</i>	<i>Communication, Translation &amp; Measure Oversight</i>	<i>Professional Development</i>	<b><i>Music/Visual and Performing Arts (VAPA)</i></b>	<i>Program Evaluation</i>	<b><i>BSEP &amp; BERRA Plans @ School Board 6/10/26</i></b>
	<i>Counseling &amp; Behavioral Health</i>	<i>Libraries</i>	<i>Educator Recruitment, Retention &amp; Development</i>	<i>Student Achievement Strategies</i>	<b><i>Libraries</i></b>	<i>Professional Development</i>	<b><i>Consolidated School Plans (includes BSEP Site Fund Plans) @ School Board 6/10/26</i></b>
		<i>Instructional Technology</i>		<i>Classroom Support</i>	<b><i>Instructional Technology</i></b>	<i>Student Achievement Strategies</i>	
	<b>Action</b>	<b>Action</b>		<i>Expanded Course Offerings</i>	<b><i>Communication, Translation &amp; Measure Oversight</i></b>	<i>Classroom Support</i>	
	<i>HQI: Class Size Reduction (BSEP Teacher Template)</i>	<i>Counseling &amp; Behavioral Health</i>			<b><i>Recruitment, Retention &amp; Development</i></b>	<i>Expanded Course Offerings</i>	

\*Preliminary Reduction (set aside for potential other uses aligned with terms of the measure) - Subject to Change

# 2026-27 BSEP Plans 5/26/26

**May 26, 2026**

**Plans for Action** - Summaries of changes for each program will be reviewed:

- Final Plans for Action - Professional Development - **Item 9 - Includes**
  - Final Plans for Action - Student Achievement Strategies - **Item 10**
  - Final Plans for Action - Classroom Support - **Item 11**
  - Final Plans for Action - Program Evaluation - **Item 12**
  - Final Plans for Action - Expanded Course Offerings - **Item 13**
- 
- ❖ **All programs have updated budgets and changes from 1st Reading**
  - ❖ **Each Item will have a summary of changes presented as part of the item, followed by a P&O Action**
  - ❖ **Note: A “yes” vote indicates the P&O is recommending the Board approve the plan and budget**

# 2026-27

## HQI, Student Achievement Strategies, and Counseling

### As of 5/26/26

2026-27 BSEP Measure H									
<b>DRAFT</b>									
5/5/26									
		HQI Update 4/21/26	HQI Update 4/30/26	HQI Update 5/26/26	notes 5/26/26	Student Achievement Strategies 4/21/26	Student Achievement Strategies 5/26/26	Counseling and Behavioral Health 3/24/26	
Revenue	66%	\$ 29,522,848	\$ 29,522,848	\$ 29,522,848		\$ 2,169,482	\$ 2,169,482	\$ 961,729	
<b>Expenditures</b>						\$ 2,166,642	\$ 2,161,511	952,617	
	Class Size Reduction (BSEP TT)	\$19,971,300	\$21,037,200	\$21,037,200					
	Professional Development	\$3,087,650	\$3,087,650	\$2,710,293	removed 230k E1 CO				
	Classroom Support	\$2,544,848	\$2,544,848	\$2,405,294	Revised sal projection and net -.8 FTE				
	Program Evaluation	\$1,032,228	\$1,032,228	\$848,889	removed 150k E1 CO				
	Expanded Course Offerings	\$1,179,599	\$1,179,599	\$1,174,107	Revised sal projection				
	~10% Reduction		-\$802,353			-10.23%			
	<b>Total HQI Programs</b> PD, CS, ECO, PE (BREA)	<b>\$7,844,325</b>	<b>\$7,041,972</b>	<b>\$7,138,583</b>					
<b>Tentative Expenditures 4/30/26</b>									
	1.0 Special Ed IEP Coach from BERRA		\$143,122		Moved into CS				
	0.2 Black Studies from Student Achievement Strategies		\$31,506		Moved into PD				
	Indirect (4.66%)	\$1,296,208	\$1,316,627	\$1,312,991					
<b>TOTAL Expenditures</b>		<b>\$29,111,833</b>	<b>\$29,570,427</b>	<b>\$29,488,774</b>		<b>\$2,166,642</b>	<b>\$2,161,511</b>	<b>\$952,617</b>	
<b>Projected Ending Fund Balance</b>		<b>\$411,015</b>	<b>(47,579)</b>	<b>34,073</b>		<b>\$2,840</b>	<b>\$7,971</b>	<b>\$9,112</b>	
<b>Measure E1 Carryover for 2026-27 Plans</b>									
	E1 PD Initiatives		\$230,000	\$230,000					
	E1 Prog Eval Contracts			\$150,000					

### Measure E1 Carryover is Reserved for Expenses:

- Professional Development Initiatives \$230,000
- Program Evaluation Contracts \$150,000

**2026-27**

*HQI Measure E1  
Fund Balance per  
2025-26 2nd  
Interim and  
Planned Uses*

**As of 5/12/26**

*(no changes for 5/26/26)*

BERKELEY UNIFIED SCHOOL DISTRICT	
FUND 04 - BERKELEY SCHOOLS EXCELLENCE PROGRAM (BSEP) - Measure E1	
Revenue and Expenditures	
Comparison Report - 2nd Interim 2025-26	
	CSR/Instruction 0741
<b>REVENUE</b>	
Parcel Tax Revenue	\$ -
Parcel Tax Revenue-Prior Year	\$ 734,867
<b>Net Revenue</b>	\$ 734,867
<b>EXPENDITURES</b>	
Certificated Salaries	\$ 148,045
Classified Salaries	\$ -
Employee Benefits	\$ 35,323
Books & Supplies	\$ 231,031
Unallocated Reserve and Carryover	\$ -
Contracted Services	\$ 301,123
Capital Outlay	\$ -
Indirect Costs	\$ 47,400
<b>TOTAL EXPENDITURES</b>	\$ 762,922
<b>EXCESS (DEFICIENCY) OF REVENUES OVER EXPENDITURES</b>	\$ (28,055)
<b>NET INCREASE (DECREASE)</b>	\$ (28,055)
<b>FUND BALANCE ANALYSIS</b>	
Beginning Fund Balance	\$ 1,307,141
Net Increase (Decrease) in Fund Balance	\$ (28,055)
<b>Ending Fund Balance</b>	\$ 1,279,086
Program Evaluation - Contracts for two Years (2026-27, 2027-28)	\$ 300,000
Professional Development Program Activities 2026-27	\$ 230,000
<b>Adjusted Balance</b>	\$ 749,086